

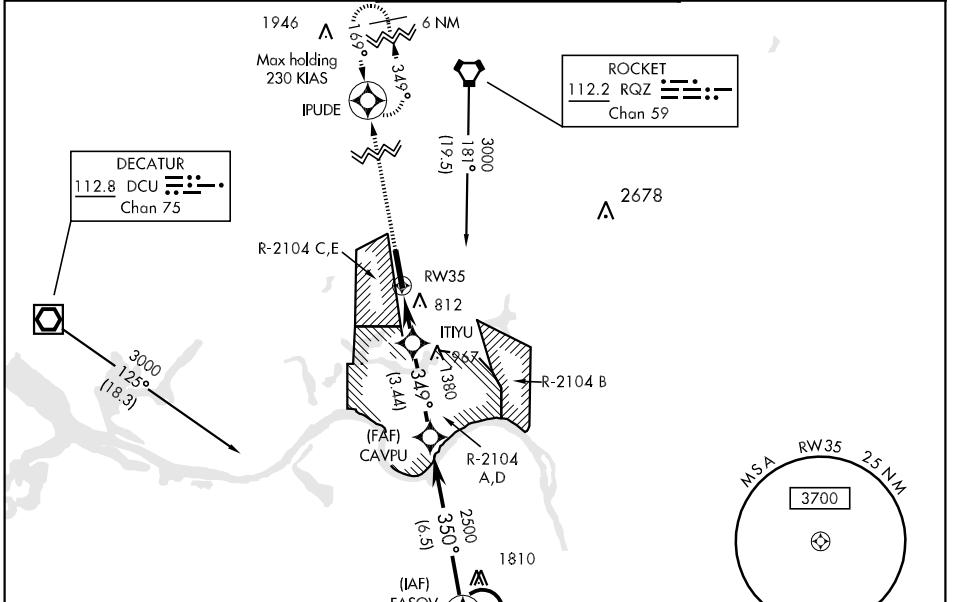
APCH CRS 349°	Rwy Idg 7300
	TDZE 685
	Arpt Elev 685

AL-703 [USA]

REDSTONE AAF (KHUA)

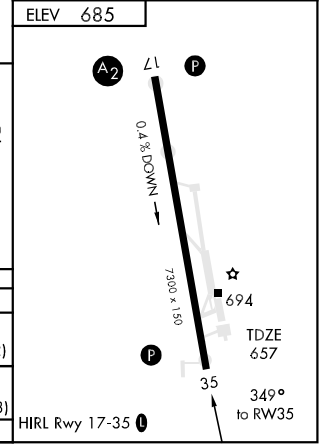
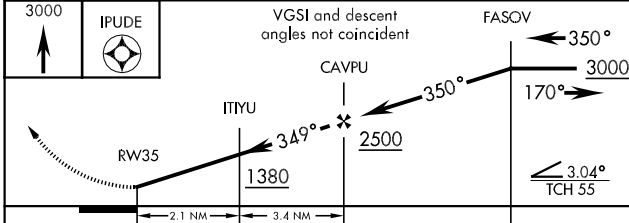
<p>▲ NA * When ALS inop, increase CAT CDE by ¼ mile.</p> <p>▼ ** Circling not authorized E of Rwy 17-35.</p>	<p>MISSED APPROACH: Climb to 3000 direct IPUDE and hold.</p>
--	--

<p>HUNTSVILLE APP CON</p> <p>E 125.6 354.1 W 118.05 239.0</p>	<p>REDSTONE TOWER *</p> <p>126.95 (CTAF) 0 290.275</p>	<p>ASR/PAR</p>
--	---	----------------



NOTE: When local altimeter setting not received, use HSV INTL altimeter setting and increase all MDAS 20'.
 Procedure NA at night.
 Visibility reduction by helicopters NA.
 Procedure NA for arrivals at RQZ VORTAC via V321 northbound.
 Procedure NA for arrivals at DCU VOR/DME via V49 northbound and V541 northwest bound.

<p>3000</p> <p>IPUDE</p>	<p>ELEV 685</p>
--------------------------	-----------------



CATEGORY	A	B	C	D	E
RNAV MDA *	1260-1	603 (600-1)	1260-1½ 603 (600-1½)	1260-1¾ 603 (600-1¾)	1260-2 603 (600-2)
CIRCLING **	1260-1	576 (600-1)	1260-1¾ 576 (600-1¾)	1280-2 596 (600-2)	1600-3 916 (1000-3)
S-PAR 35	905-1		250 (300-1)	GS 3.0°	

SE-4, 05 JUN 2008 to 03 JUL 2008

SE-4, 05 JUN 2008 to 03 JUL 2008