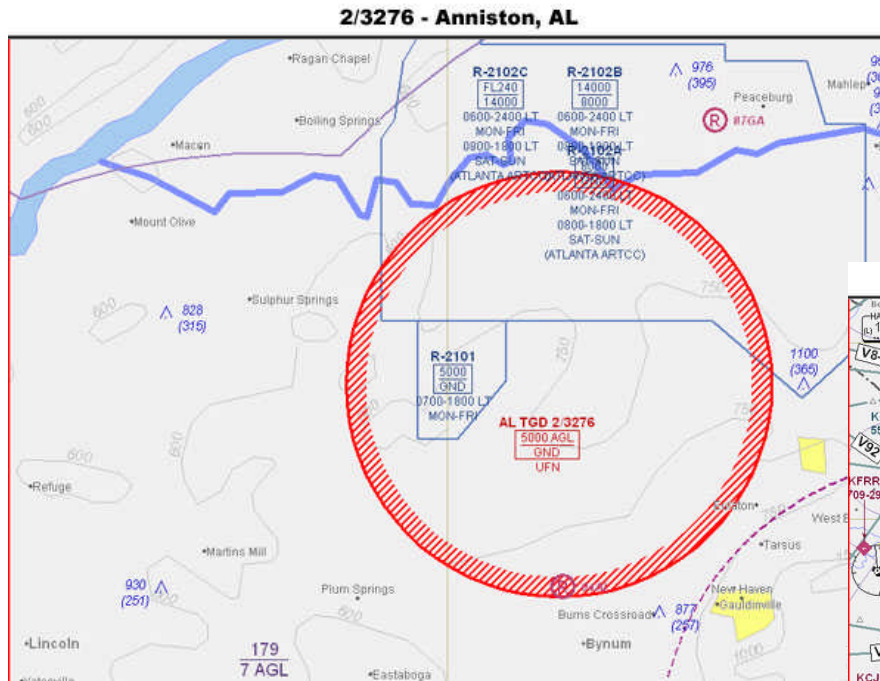


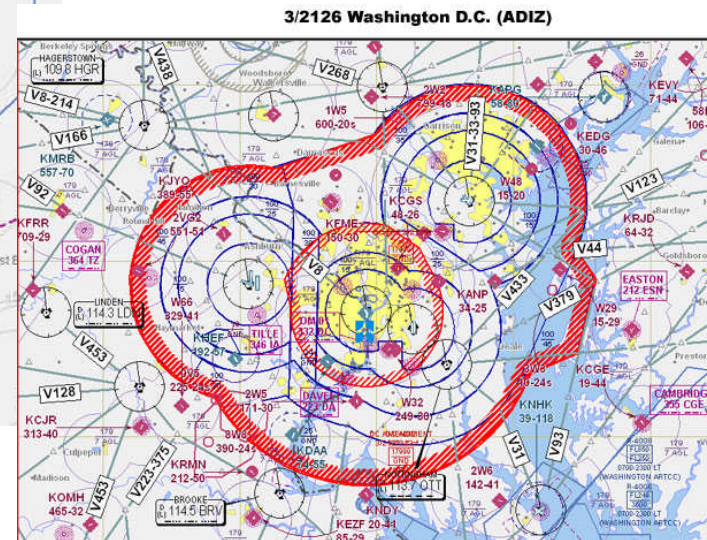


*Some Safety Stuff.....*

# Don't forget those Temporary Flight Restrictions (TFR)



*Get that FSS briefing!*



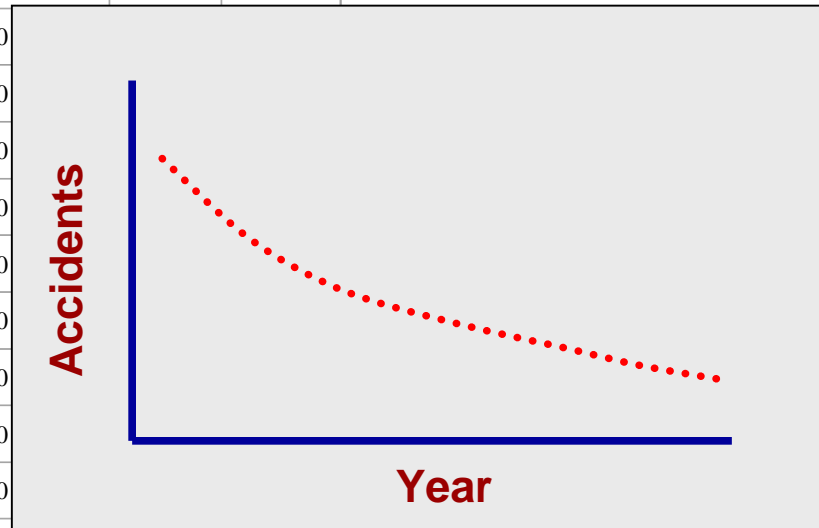
Graphics shown at:

<http://www1.faa.gov/specialnotams/specialnotamlisting.htm>

**Check NOTAMS**

Year	Accidents		Fatalities		Flight Hours	Accidents per 100,000 Flight Hours	
	All	Fatal	Total	Aboard		All	Fatal
1983	3,075	555	1,068	1,061	28,673,000	10.67	1.92
1984	3,017	545	1,042	1,021	29,099,000	10.28	1.84
1985	2,739	498	956	945	28,322,000	9.63	1.73
1986	2,581	474	967	879	27,073,000	9.49	1.73
1987	2,494	446	837	822	26,972,000	9.18	1.62
1988	2,388	460	797	792	27,446,000	8.65	1.66
1989	2,243	432	769	766	27,920,000	7.97	1.52
1990	2,241	443	767	762	28,510,000	7.85	1.55
1991	2,197	438	799	785	27,678,000		
1992	2,111	451	867	865	24,780,000		
1993	2,064	401	744	740	22,796,000		
1994	2,022	404	730	723	22,235,000		
1995	2,056	413	735	728	24,906,000		
1996	1,908	361	636	619	24,881,000		
1997	1,845	350	631	625	25,591,000		
1998	1,904	364	624	618	25,518,000		
1999	1,906	340	619	615	29,713,000		
2000	1,837	344	595	584	29,057,000	6.30	1.16
2001	1,726	325	562	558	27,451,000	6.28	1.18
2002	1,714	343	576	570	26,078,000	6.56	1.30

## Accidents, Fatalities, and Rates, 1983 through 2002, U.S. General Aviation

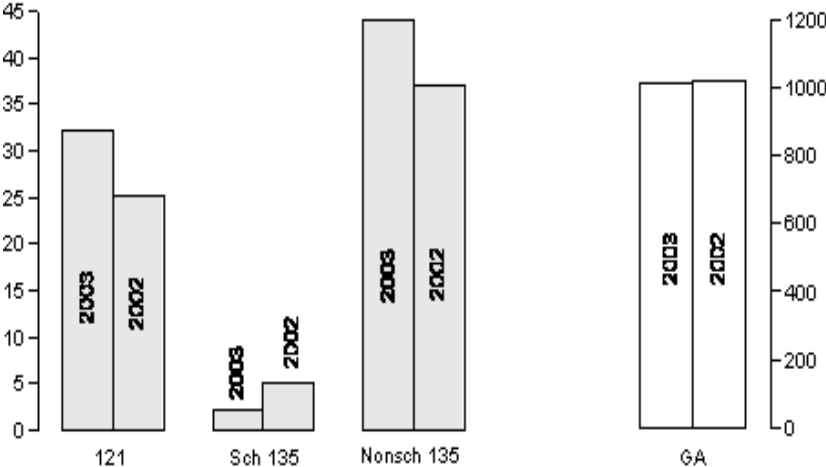


**Year to date 2002 vs. 2003, General Aviation (July)**

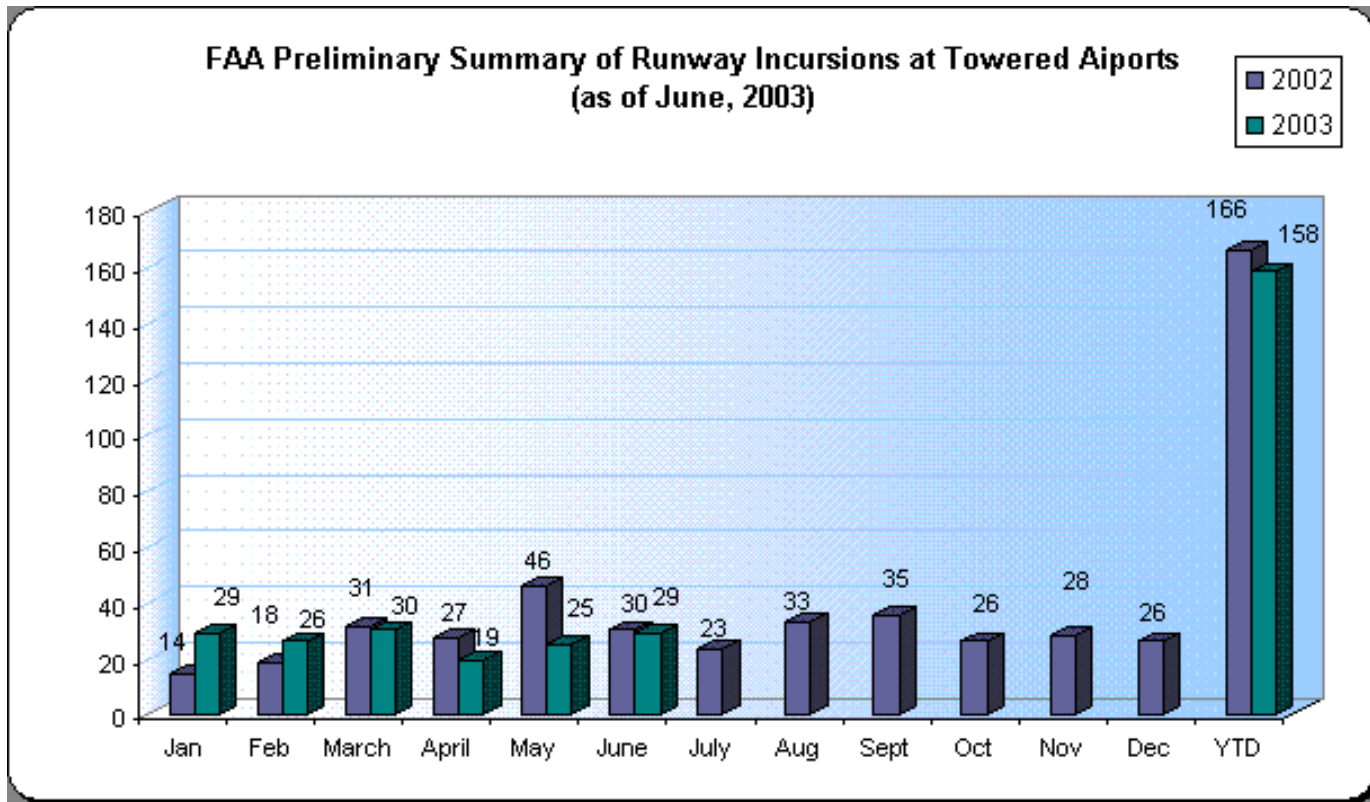
	2002	2003	
Personal	650	645	#1
Business	27	40	
Corporate	0	4	
Aerial Appl.	53	58	
Instructional	154	137	#2
Other	129	135	

*We're declining....some*

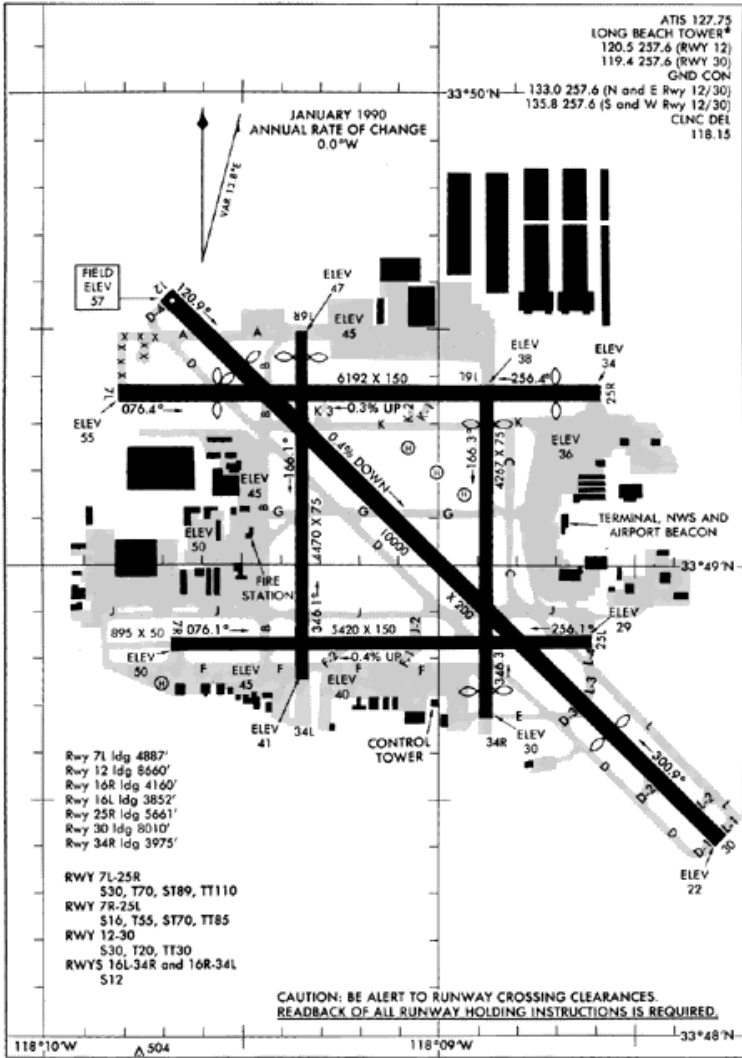
YEAR-TO-DATE AT A GLANCE  
(through July 31)



## *Somewhat Better with Runway Incursions....*



*Studying those signs ....paying off..!!*



Stay current with runway signs and markings. If unfamiliar airport, get **LARGE** copy of airport diagram!!

*Good flight planning prior to flight  
Study the chart*

*Challenge... Take the Air Safety  
Foundation's Runway Safety  
Quiz....*

[http://www.aopa.org/asf/runway\\_safety/](http://www.aopa.org/asf/runway_safety/)

*Or the FAA's....*

[http://www.nw.faa.gov/exec\\_staff/quiz/q1.htm](http://www.nw.faa.gov/exec_staff/quiz/q1.htm)

*Our wonderful world of digits, maps, switches,  
and fun things in the cockpit....*

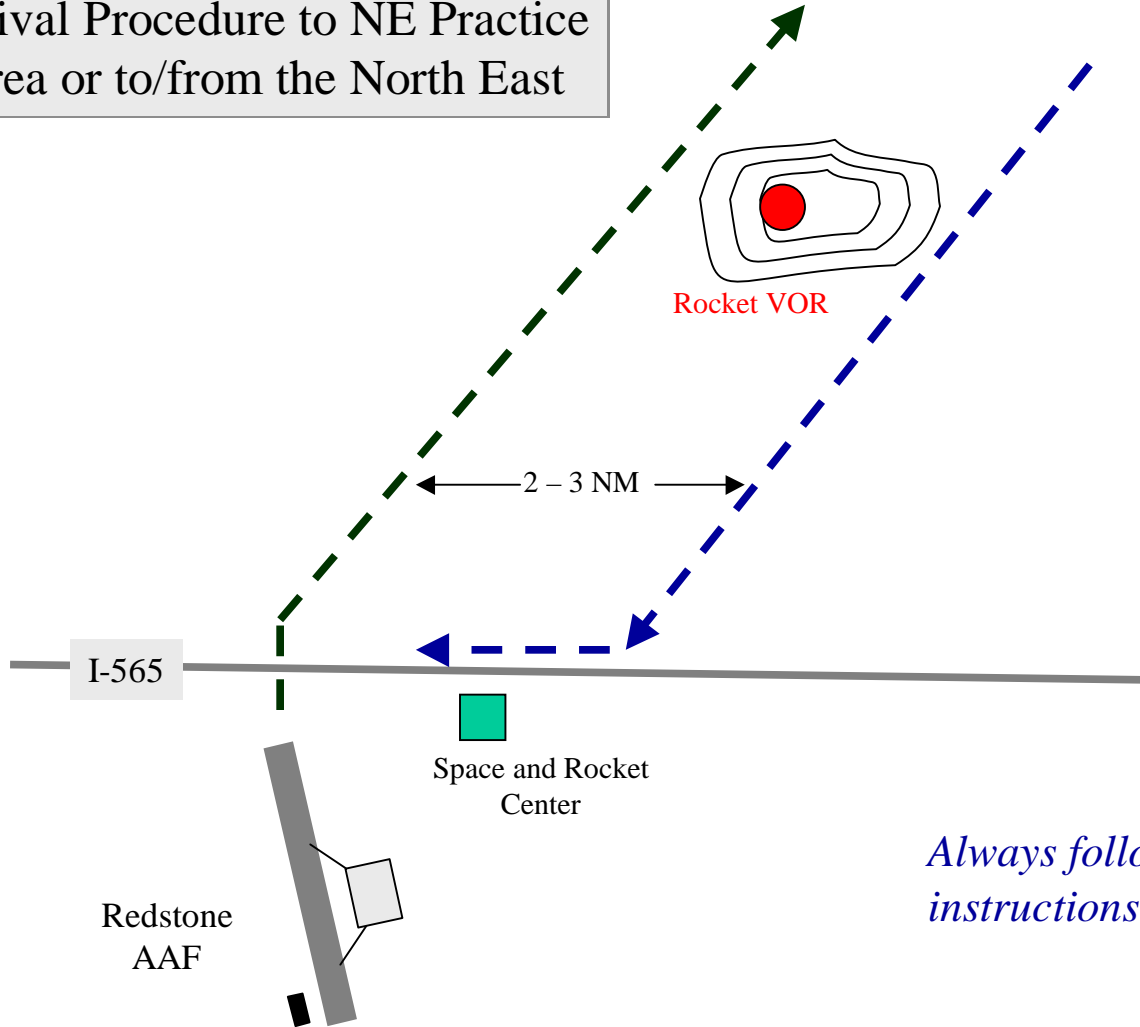


*“Must have:  
Master of Science in  
Computer Science, major  
in symbology and switchology and  
graphology and frustrateology”*



*Please, keep your eyes outside  
the cockpit !!!*

Recommended Departure and  
Arrival Procedure to NE Practice  
Area or to/from the North East



*Always follow ATC  
instructions....*